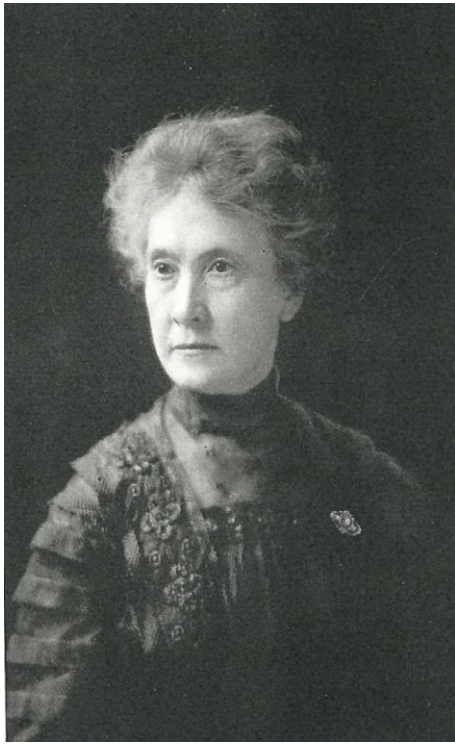


**Belle Goudy  
Inducted 2019**



**Belle** grew up on Ohio before moving to Bloomington as an adult in the 1860's. She served District 87 from 1864-1911 as a teacher, Assistant Principal, and Principal. Her progressive spirit made her a leader in all modern educational movements, and she was a pioneer in the introduction of domestic science as part of regular school work. Her excellent moral and intellectual influence influenced those placed in her charge. Miss Goudy was said to have been one of the most progressive women in public, was full of life, and active in social and civic affairs according to her obituary in the *Pantagraph* on June 13, 1922.